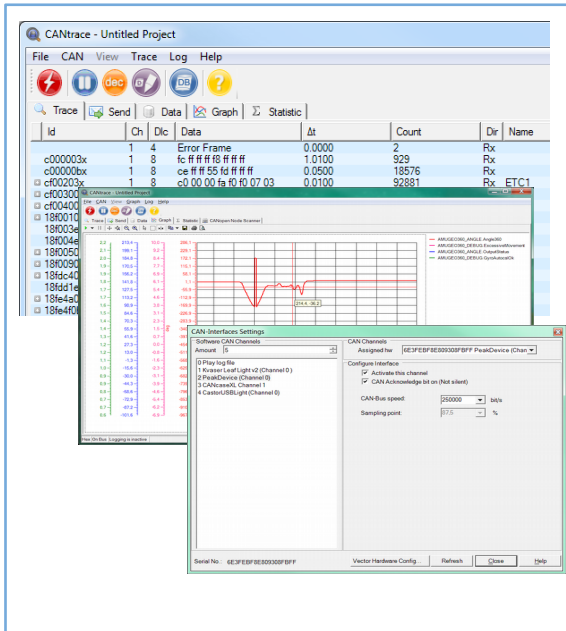


# CANtrace

TK Engineering CANtrace is an advanced but easy to use CAN monitoring tool, which can use both Kvaser, Vector, Peak or Softing CAN interface as interface to the CAN-bus. CANtrace provides easy configuration for tracing (listing), Graphical presentation of signals, sending messages to CAN-bus and logging functions. CANtrace also offers time stamping of all messages.



- Trace, Fixed Trace
- Logging Functions
- Works with 11 and 29 bit identifiers
- Works with bus-speeds up to 1 Mbit/s
- Supports Kvaser, Vector, Peak and Softing hardware
- Easy setup
- Database support
- Data Window using Database(s)
- Graph Window using Database(s)
- J1939 support
- CANopen support
- Bus statistics (busload, peakload, frames cnt...)
- Replay-function
- Sending of messages from DBC-file

## Supports Common CAN Hardware and Speeds

CANtrace works with both 11 and 29 bit identifiers. In the Trace window the user can see CAN-id, Data Length, Data and timestamp for the messages. The user can choose to fix the trace window (message on the screen with same id will be updated) or view all messages chronologically. CANtrace works with bus-speeds up to 1 Mbit/s. CANtrace works on all Windows-environments and in any PC with a serial or USB port. CANtrace supports all CAN interfaces from Kvaser, Vector, Peak and Softing, others can be added on request.

## Graph Plots Signals Based on Database (DBC)

CANtrace can display signals also graphically by using the Graph-window. Using databaseconnection (DBC) the user has a possibility to show signals in graph-format. The graphs can also be cut and pasted to reports done e.g. In Microsoft MS-Office.

## Log and Replay CAN Data

New added function is the Replay-function. This means that log-file(s) made by CANtrace can be re-played off-line. Useful when analyzing messages/signals afterwards.

## Send CAN Messages based on Database

The new and improved Send window now offers the opportunity to choose messages from the attached DBC-file and change the physical values of the signals in the messages. This significantly improves the use of the Send window when testing devices and networks.

## CANopen and J1939 Protocol Support

In the trace view CANopen messages and J1939 PGNs are decoded to human readable format. CANtrace also supports the long J1939 transport layer frames, and can both send and receive signals embedded in transport layer framers.

The included CANopen node scanner gives you an overview of what CANopen nodes are on the bus, lets you see their status, and start, stop or reset individual nodes.

